

San Diego SELFGEN Incentive Program

Scott J. Anders

San Diego Regional Energy Office
8520 Tech Way, Suite 110
San Diego, CA 92123
(858) 244-1180
www.sdenergy.org

Program Overview

- Level 1
 - PV
 - Wind
 - Renewable Fuel Cells
- System Size
 - 30 kW – 1.5 MW (rebates up to 1 MW)
 - Smaller systems can be aggregated to reach 30 kW (*each must be <200% peak demand*)
- Rebates
 - \$4.50 or 50%, whichever is less
- Website
 - www.sdenergy.org/selfgen

Program Update - Funding

- Available Funding

– Level 1	\$514,584
– Level 2	\$7,411,782
– <u>Level 3</u>	<u>\$5,379,004</u>
TOTAL	\$13,305,371

- Shifting Funds

- Level 2,3 → Level 1
- All \$13,305,371 could be used for PV

SELFGEN Program Summary

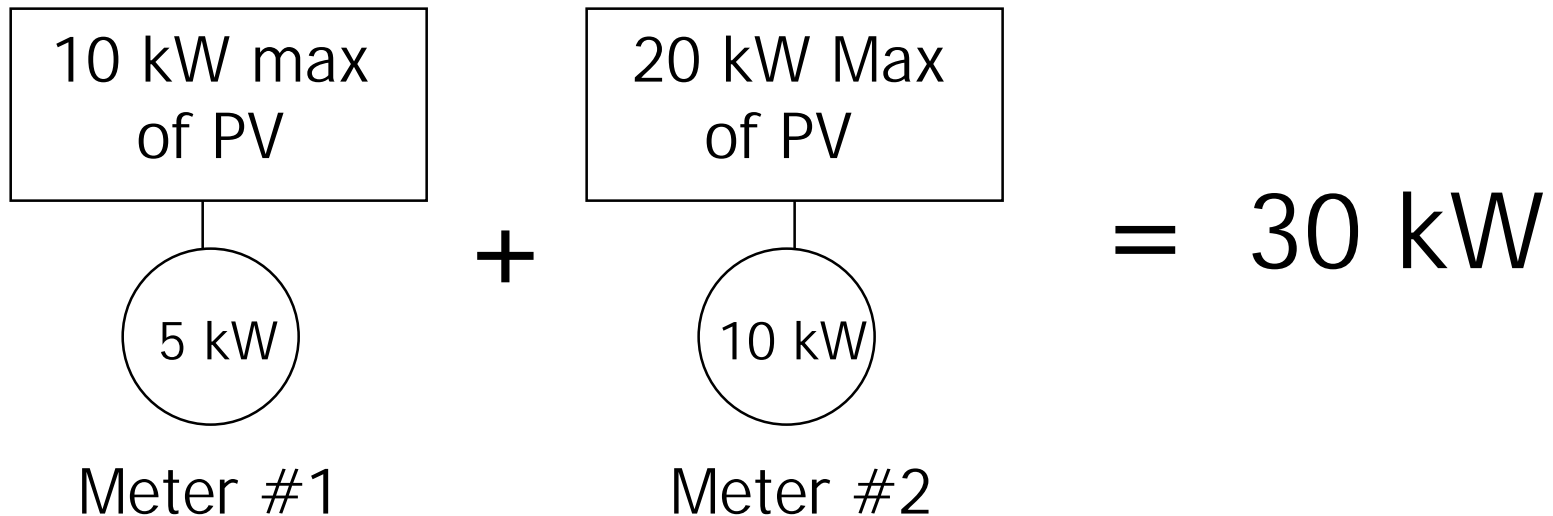
SELFGEN Program Level 1 Summary				
	SDREO			Statewide
	2001	2002	Total	Current
Total Systems	8	4	12	151
Total Capacity (MW)	1.7	1.8	3.5	22.6
System Size (kW)				
–Average	143	465	304	150
–High	863	999	931	1200
–Low	30	30	30	30
System Cost (\$/watt)				
–Average	\$8.84	\$9.63	\$9.24	\$8.76
–High	\$11.44	\$11.22	\$11.33	\$16.93
–Low	\$5.96	\$8.10	\$7.03	\$4.09

Program Update - Process

- **Insurance Requirements**
 - Both Applicant & Host Customer
 - Professional Liability
 - Errors and Omissions (*Applicant or Subcontractor*)
- **Generation Output Meters**
 - Required for M&E of SELFGEN Program
 - If system >30 kW – GOM Required by SDG&E
 - If NOT required by SDG&E – SELFGEN will cover 100% costs
 - SDREO will begin requiring one line drawings to verify GOM
 - Energy Waves for GOM
 - SDGE Contact: Bruce Barnes 858.654.8236
- **Cost Documentation**
 - Turnkey Contract + Host Customer cancelled check
 - Invoices, Receipts, etc for ALL PROJECT COSTS!

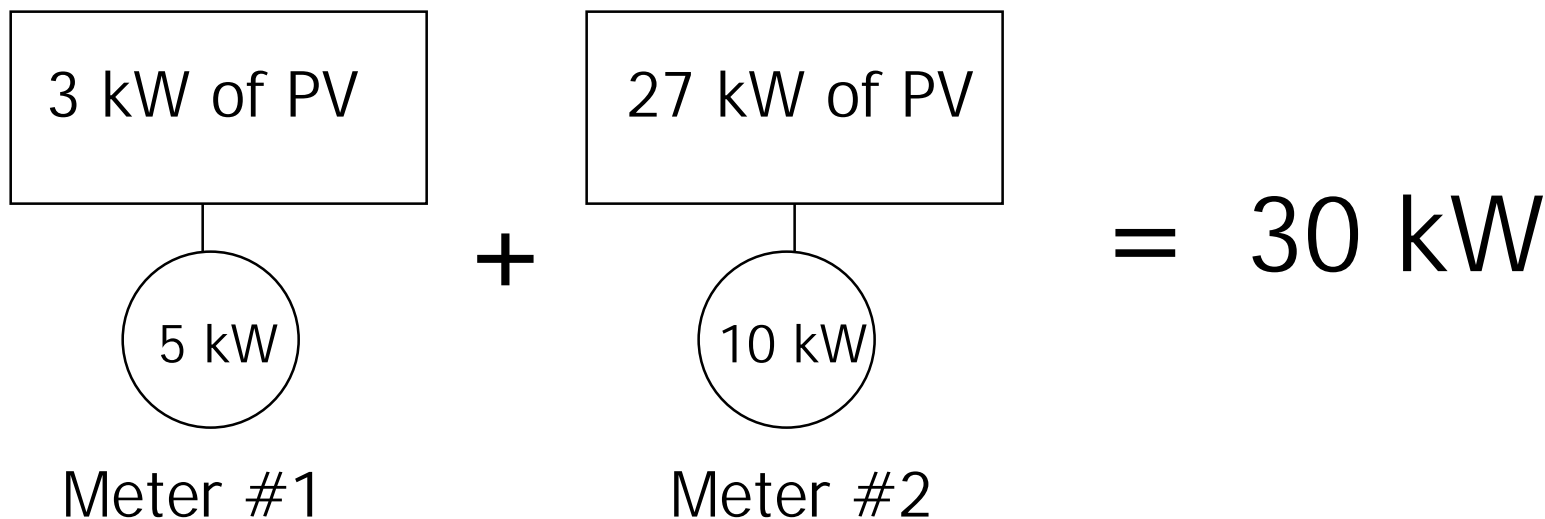
Program Update - Process

- 200% Peak Demand Issue
 - Determined by meter
 - Example – 2 PV systems on same site:



Program Update - Process

- NOT ELIGIBLE



Questions?

Scott J. Anders

858-244-1180

San@sdenergy.org